

Forte+ Wirepas

Wirepas Mesh 2.4GHz tag/anchor

Data sheet



Key features

- Suitable for outdoor and industrial applications
- Based on Nordic nRF52832
- Firmware based on Wirepas libraries
- 3-axis accelerometer for motion detection
- High-visibility RGB LED
- Rugged IP67 enclosure
- Powered by replaceable CR123A lithium battery



Wirepas

Wirepas Specifications

Based on Wirepas Mesh 2.4GHz stack v5.x

Available applications: Wirepas PosApp, BlueUp PosApp

Wirepas PosApp

Configuration and diagnostics	WNT (Wirepas Network Tool)
-------------------------------	----------------------------

Operating modes	Opportunistic anchor, NRLS tag, Autoscan tag, DA tag
-----------------	--

BLE beaconing	iBeacon, Eddystone UID, Eddystone URL (fixed packet)
---------------	--

BlueUp PosApp (Anchor)

Configuration and diagnostics	WNT (Wirepas Network Tool) / BlueUp MeshCube
-------------------------------	--

Operating modes	Opportunistic anchor
-----------------	----------------------

BLE beaconing	iBeacon, Eddystone UID (configurable packet)
---------------	--

BlueUp PosApp (Tag)

Configuration and diagnostics	WNT (Wirepas Network Tool) / BlueUp MeshCube
-------------------------------	--

Operating modes	NRLS tag, Autoscan tag (configurable for each state)
-----------------	--

Tag states	Default, Motion, Alarm, Sleep
------------	-------------------------------

Positioning interval and timeout	15 secs to 18 hours (configurable for each state)
----------------------------------	---

BLE beaconing	iBeacon, Eddystone UID, Quuppa Emulation (configurable for each state)
---------------	--

Device specifications

Electrical specifications

Core module	Nordic nRF52832 SoC (MCU and radio transceiver)
-------------	---

MCU core	ARM Cortex-M4 32-bit CPU
----------	--------------------------

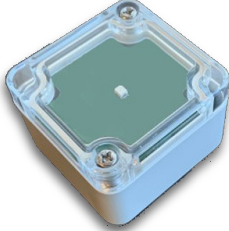
Current consumption (25°C)	Radio TX: 7.1 mA (0 dBm TX) Radio RX: 6.5 mA
----------------------------	---



	Idle mode: 3 μ A Idle mode with accelerometer ON: 7 μ A
Radio specifications	
Standard	Wirepas Mesh 2.4GHz (stack v5.x)
Frequency band	2.402 to 2.480 GHz
Channel spacing	2 MHz
BLE beaconing channels	CH37 (2.402 GHz), CH38 (2.426 GHz), CH39 (2.480 GHz)
TX power	Conducted: +4 dBm (max) EIRP (Equivalent Isotropic Radiated Power): +6 dBm (max)
Antenna	
Type	Integrated meandered planar inverted F-antenna (PIFA)
Gain	2 dB (max)
Radiation diagram	Omnidirectional
Power	
Power supply	Battery
Replaceable	Yes
Type	CR17345 (3V, lithium)
Model	Panasonic Industrial CR123A (typical capacity 1500 mAh @ 25°C)
Sensors and interfaces	
Sensors	3-axis MEMS linear accelerometer
Interfaces	RGB LED
Mechanical specifications	
Material	Polycarbonate plastic
Color	Light grey RAL7035
Size	50 x 52 x 35 mm (version without flanges) 50 x 80 x 35 mm (version with flanges)
Weight	60 gr (version without flanges) 67 gr (version with flanges)
Fastening	Screws (not included), silicone glue, double side tape
Opening	Front cover with two screws
Protection	IP67/NEMA6
Flammability	UL 94 HB
Environmental specifications	
Operating temperature	-30°C to +70°C (battery operating life sharply decreases under -10°C)
Storage temperature	+10°C to +30°C (with battery), -40°C to +85°C (without battery)
Certifications	
CE	

Versions

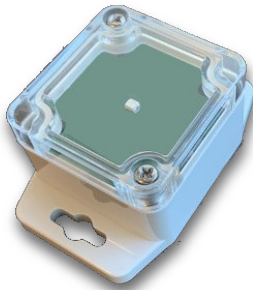
NF



Enclosure without flanges.
 Front cover allows an easy battery replacement.
 Transparent front lid for high-visibility LED.

Size: 50 x 52 x 35 mm

WF



Enclosure with flanges.
 Front cover allows an easy battery replacement.
 Transparent front lid for high-visibility LED.

Size w/o flanges: 50 x 52 x 35 mm
 Size w flanges: 50 x 80 x 35 mm

BlueUp reserves the right to change product specifications at any time without prior notice.
 Wirepas is a trademark of Wirepas Oy , iBeacon is a trademark of Apple Inc., Eddystone is a trademark of Google Inc.,
 Quuppa is a trademark of Quuppa Oy, ARM and Cortex are trademarks of ARM Inc.